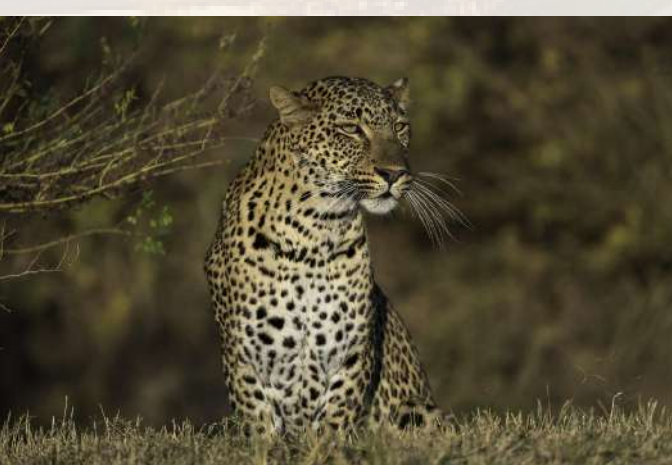




Golf and Safari

PACKAGE #1

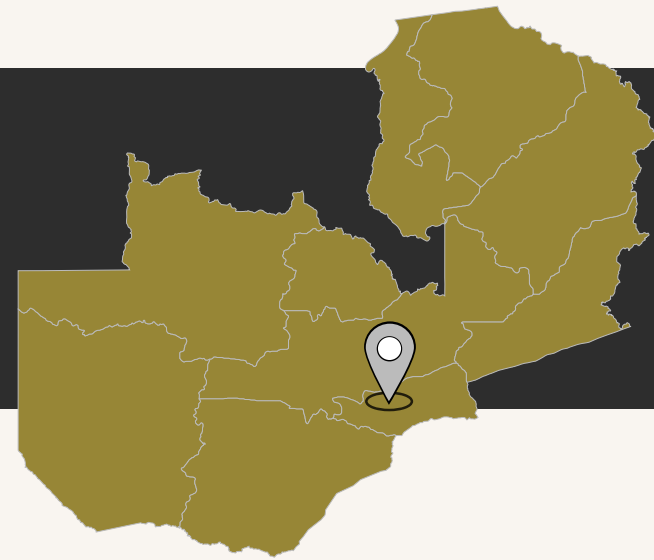
CIÊLA
—
TRIBUTE PORTFOLIO



Golf Safari
ZAMBIA

DAY 1-4 – LUSAKA

CIÊLA RESORT & SPA,
BONANZA GOLF COURSE



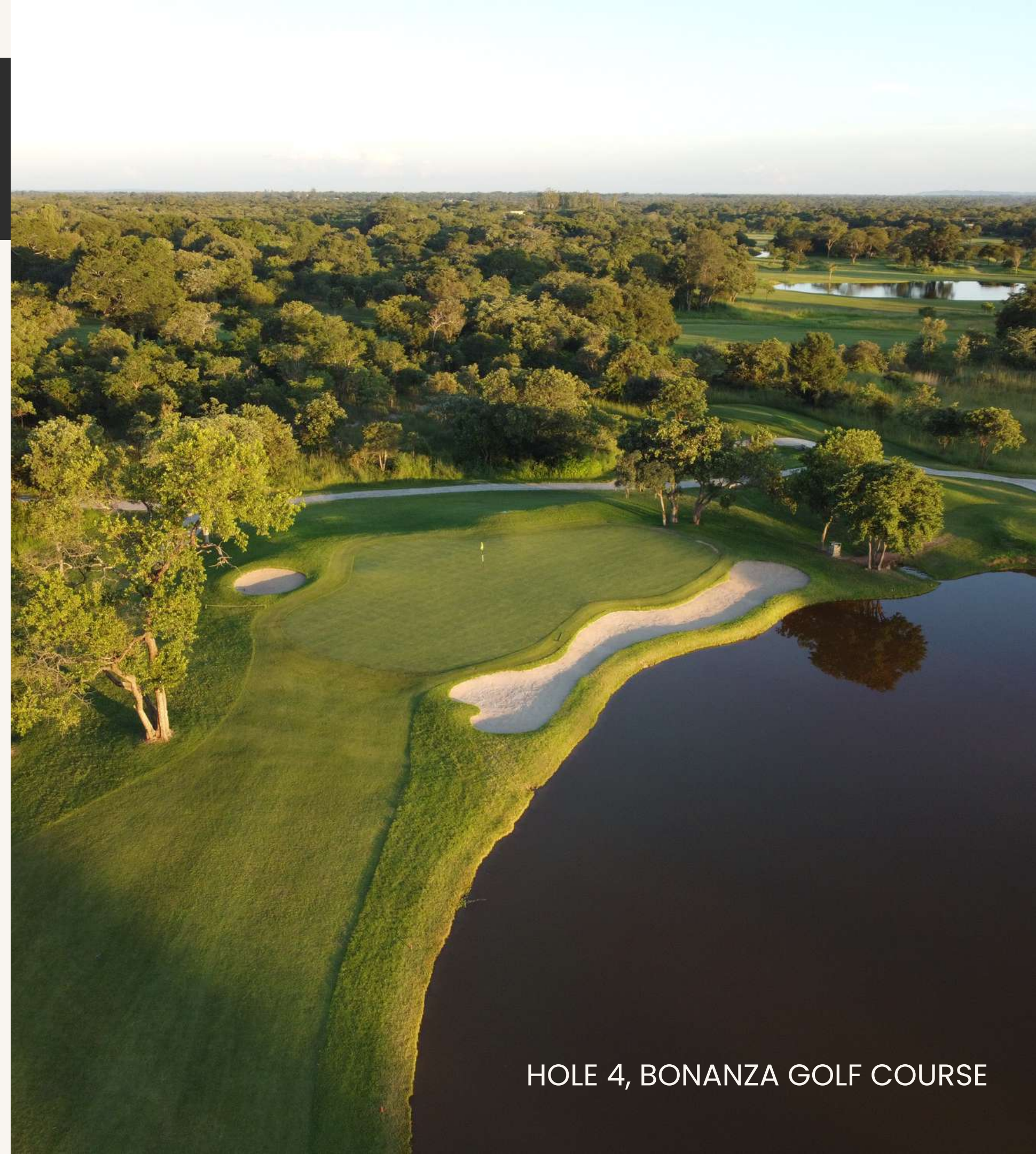
● Arrive at Kenneth Kaunda
International Airport, Lusaka

● Meet and greet with Zambia
Ground Handlers

● Transfer to Ciêla Resort & Spa

● Four nights accommodation at
Ciêla Resort & Spa, with 3
rounds of 18-holes

CIÊLA
—
TRIBUTE PORTFOLIO



HOLE 4, BONANZA GOLF COURSE

STAY AND PLAY

Surround yourself in Zambia's number one golfing resort, a lavish retreat located just 15 minutes from the Kenneth Kaunda International Airport.

Ciêla Resort & Spa is embraced by beautiful scenery and sprawling lawns. Defining a new chapter in African hospitality, this luxury lifestyle resort balances countryside living and contemporary Zambian culture and spirit, with sophisticated facilities and design.

Tee off at our signature Peter Matkovich 18-hole golf course, with world class golfing facilities, including a floodlight driving range, or venture beyond the fairway to explore the nearby cultural and culinary attractions.

CIÊLA RESORT & SPA



GOLF

Opened by well renowned designer Peter Matkovich in 2017, Bonanza Golf Course is a true Zambian Gem.

Carved into the natural bush, the course will provide you with breathtaking views and true African golf experience.

Whether you are an experienced golfer or touring Zambia and simply looking to your hand at golf, Bonanza Golf Course is your destination.



Peter Matkovich



BONANZA GOLF COURSE

CIÊLA RESORT & SPA

Ciêla, Lusaka, a Tribute Portfolio Resort and Spa under Marriott International offers blissful accommodation, a sumptuous array of restaurants including a micro brewery, a pampered spa, spacious events, and a collective of local artisanal shops.

Ciêla defines a new chapter in African hospitality. Stay with us and discover how we channel contemporary Zambian culture and spirit into our experiences and design.

CIÊLA

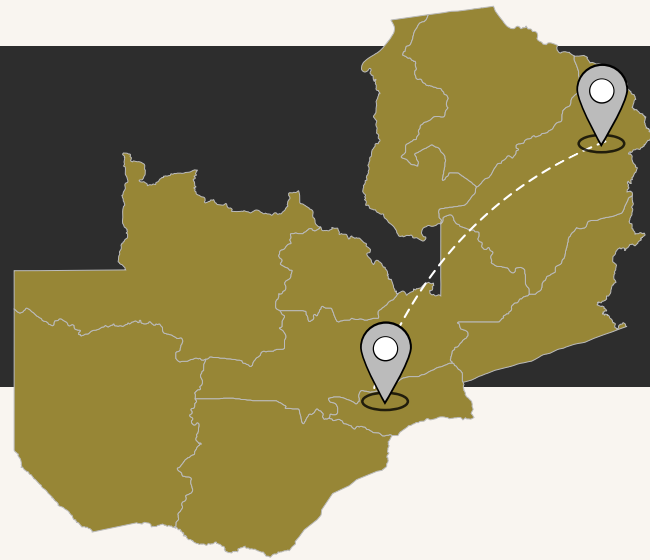
—
TRIBUTE PORTFOLIO



EXECUTIVE ROOM, CIÊLA RESORT & SPA

DAY 5 – SAFARI

MFUWE LODGE, SOUTH LUANGWA



Transfer to Kenneth Kaunda International Airport, Lusaka

Scheduled flight from Lusaka to Mfuwe

1 night stay at Mfuwe Lodge



ELEPHANT AT RECEPTION, MFUWE LODGE

MFUWE LODGE

The South Luangwa offers exceptional game-viewing in all areas but this central part where animals enjoy the protection offered by a constant presence of tourists, is unbeatable.

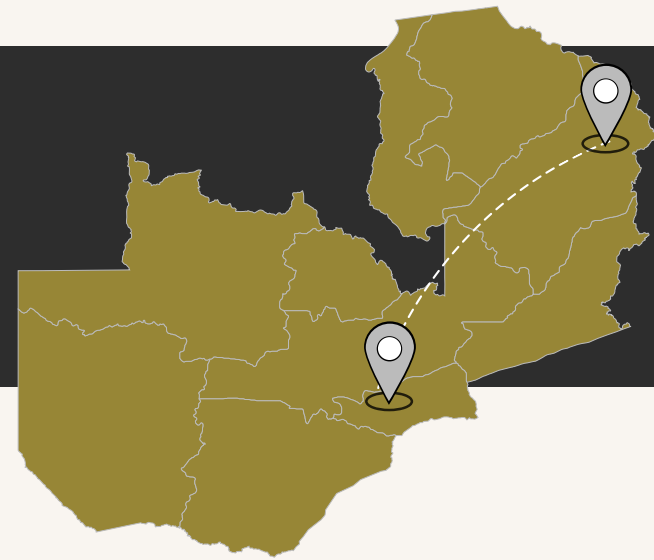
As a staging post at the start of a journey that takes you on to some of the more remote bush-camps of the South Luangwa this camp works very well.



DECK BY NIGHT, MFUWE LODGE

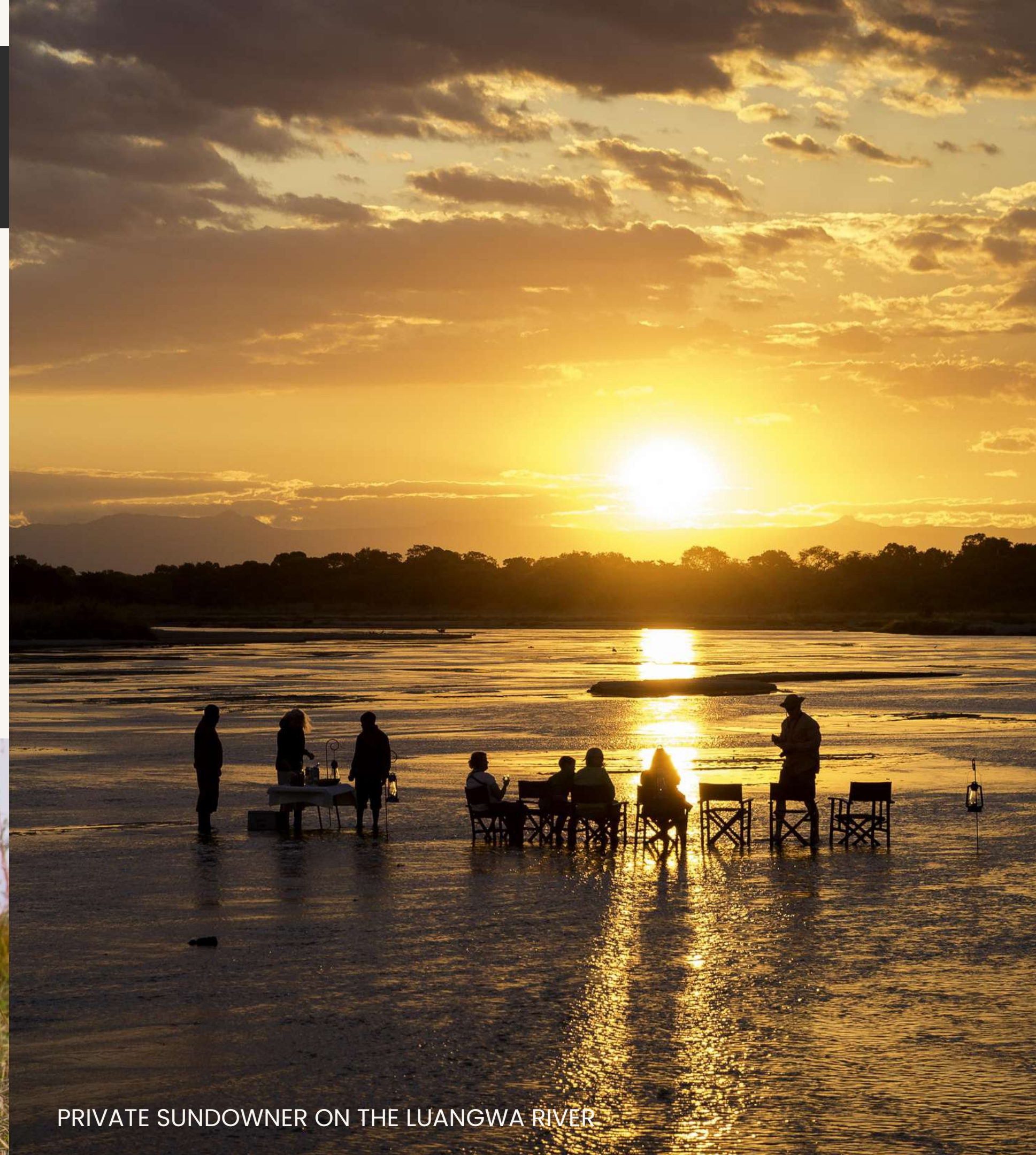
DAY 6-10 – SAFARI

BUSHCAMP COMPANY, SOUTH
LUANGWA



4 nights stay at the Bushcamp
Company, South Luangwa

Day 10 scheduled flight from
Mfuwe to Lusaka



PRIVATE SUNDOWNER ON THE LUANGWA RIVER

SOUTH LUANGWA

The South Luangwa is regarded as the home of walking safaris, certainly they were common place in this Park long before anywhere else and with the high quality of guiding found at most of the safari operations there are few places better suited to this most exciting way of experiencing the African bush.

Night drives are another popular activity offered by all camps giving guests the chance to see nocturnal species that will not be seen by day and of course the early evening hours are best for watching predators hunting. The Valley provides an excellent habitat for leopards leading to higher than usual concentrations, although they are very often seen on night-drives it is not at all uncommon to see them in daylight hours as well.



WILD DOG, SOUTH LUANGWA



ITINERARY RATES

		01 - 31 May '23		01 - 30 Jun '23		01 Jul - 30 Sep '23		01 - 31 Oct '23		01 Nov - 31 Dec '23	
DAY	DETAIL	SINGLE	SHARING	SINGLE	SHARING	SINGLE	SHARING	SINGLE	SHARING	SINGLE	SHARING
DAY 1	Meet and assist at Airport, Lusaka Transfer Lusaka Airport - Ciela Resort Ciela Resort (4 nights) Golf, & Caddy (3 rounds)	\$30 \$60 \$870 \$150	\$30 \$30 \$470 \$150	\$30 \$60 \$870 \$150	\$30 \$30 \$470 \$150	\$30 \$60 \$870 \$150	\$30 \$30 \$470 \$150	\$30 \$60 \$870 \$150	\$30 \$30 \$470 \$150	\$30 \$60 \$870 \$150	\$30 \$30 \$470 \$270
DAY 5	Transfer Ciela Resort - Lusaka Airport Scheduled flight Lusaka - Mfuwe Mfuwe Lodge (1 night)	\$60 \$330 \$740	\$30 \$330 \$570	\$60 \$330 \$825	\$30 \$330 \$635	\$60 \$330 \$975	\$30 \$330 \$745	\$60 \$330 \$825	\$30 \$330 \$635	\$60 \$330 \$740	\$30 \$330 \$570
DAY 6	Bushcamp Company Camps (4 nights)	\$3,840	\$2,960	\$4,120	\$3,160	\$4,900	\$3,740	\$4,120	\$3,160	\$3,840	\$2,960
Day 10	Scheduled flight Mfuwe - Lusaka Assisted check-in	\$330 \$0	\$330 \$0	\$330 \$0	\$330 \$0	\$330 \$0	\$330 \$0	\$330 \$0	\$330 \$0	\$330 \$0	\$330 \$0
	total per person	\$6,410	\$4,900	\$6,775	\$5,165	\$7,705	\$5,855	\$6,775	\$5,165	\$6,410	\$5,020



ITINERARY RATES

NOTES:

All prices are in US\$

This Quotation does not guarantee confirmed services, accommodation or flights

Checked baggage limit on all scheduled domestic flights is 23kgs

The quotation includes the following:

- Ciêla is on a B&B basis
- Full board accommodation, game-viewing activities, National Park fees & conservation levies at Mfuwe Lodge & The Bushcamp Company
- Drinks (except premium brands) at the Bushcamp Company
- Airport and inter-camp transfers

The quotation excludes the following:

- Visa fees for entry to Zambia
- Meals other than breakfast or any drinks at Ciêla
- Optional golf extras such as cart hire or lessons with a PGA professional
- Drinks at Mfuwe Lodge
- Gratuities and items of a personal nature

